

# Bucket Lift Pneumatic



**POWER-SPRAYS**

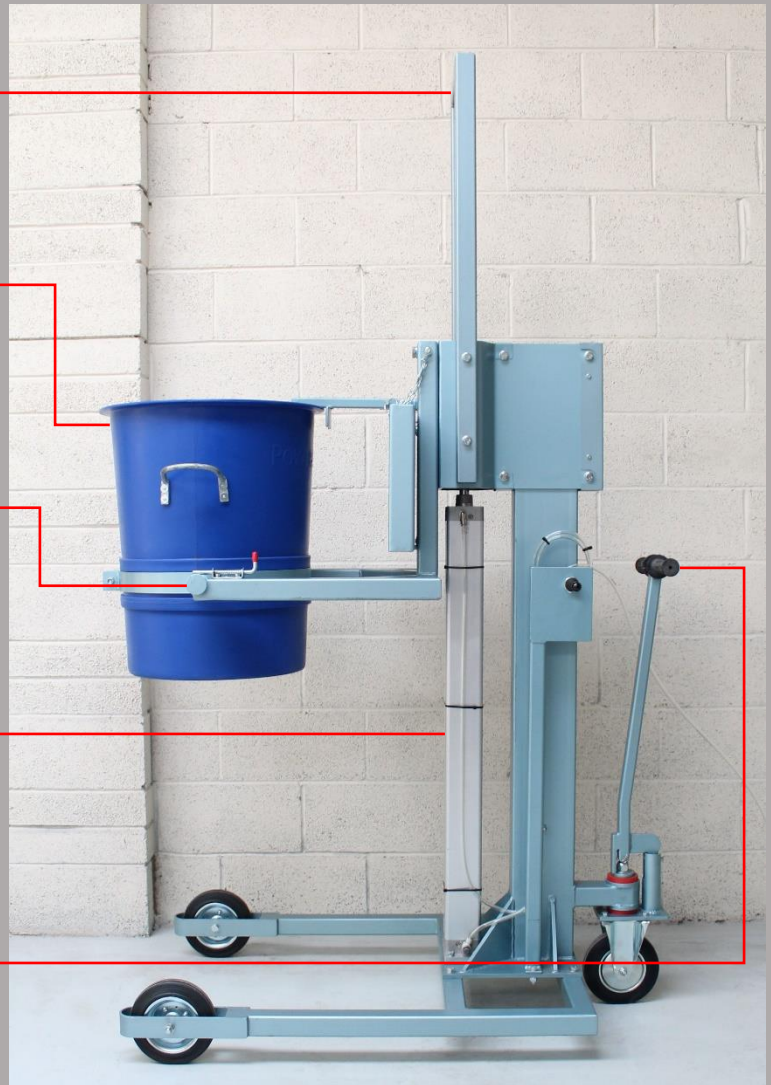
Maximum lift height of 110cm

Designed to lift Power-Sprays' 125kg capacity mixing vessels

Mixing vessel rotates easily, for pouring into a spray station, or directly into a mould

Powerful pneumatic ram, with a capacity of 150kg

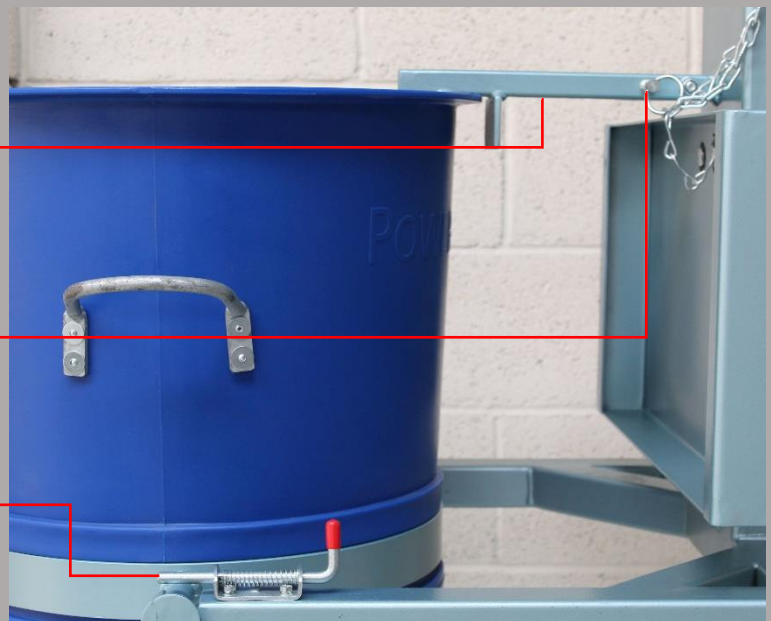
Easily manoeuvrable (the Bucket Lift should only be moved when in the lowered position)



Safety arm ensures bucket stays in position when raised

Safety pin locks arm in position

Spring-loaded latch for additional safety



Compatible with the Power-Sprays bucket trolley

The Bucket Lift can also be used to lift buckets directly from the floor



The Bucket Lift includes a hinged platform, to enable it to be used to lift materials such as sand and cement



Can be used to move the bucket directly to and from the Power-Sprays GRC125 Combination Mixer



Compatible with all Power-Sprays spray stations

A full mix can easily be poured directly from the bucket



A full GRC mix is heavy; the GRC125 Combination Mixer efficiently mixes up to 125kg of GRC, but this is too heavy to move by hand. Even a mix using a single 25kg bag of cement weighs over 60kg and exceeds the two-man lift limit.

Our range of Bucket Lifts have been developed to overcome this issue and are designed to suit all applications.

All GRC125 Combination Mixers use a standard mixing vessel, which is compatible with all Power-Sprays Bucket Lift variants (Pneumatic, Forklift and Crane).

A bucket can be moved directly from the mixer and taken to the spray station or mould. Once at the required location, the bucket is raised by the pneumatic cylinder. The locking mechanism is then disengaged, and the mix is poured directly into the mould/spray station, eliminating the need for any manual handling.

The empty mixing vessel can then be returned to the mixing station.

## Specifications

<b>Lift Capacity</b>	150kg
<b>Maximum Lift Height</b>	1110mm (from centre of forks to ground)
<b>Weight</b>	200kg
<b>Dimensions</b>	1400mm wide x 855mm deep x 1700mm high (min), 2400mm high (max)
<b>Dimensions of Platform</b>	620mm wide x 335mm deep
<b>Air Requirement</b>	5.0L per lift at 7bar (100psi)

## Why Buy from Power-Sprays?

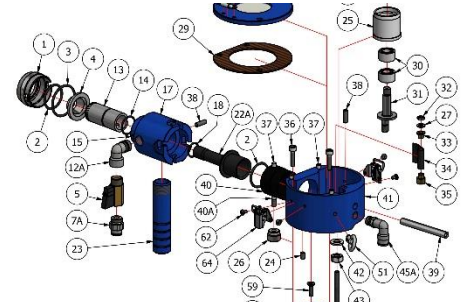
### Support



### Experience



### Comprehensive Technical Manuals



### Power-Sprays Ltd

Avonmouth Way, Bristol, BS11 9YA, UK

Tel: +44 (0)117 9820067 Fax: +44 (0)117 9820060

Email: [info@power-sprays.co.uk](mailto:info@power-sprays.co.uk) Web: [www.power-sprays.com](http://www.power-sprays.com)

