

WAAPS 3000

Liquid Dispensing System



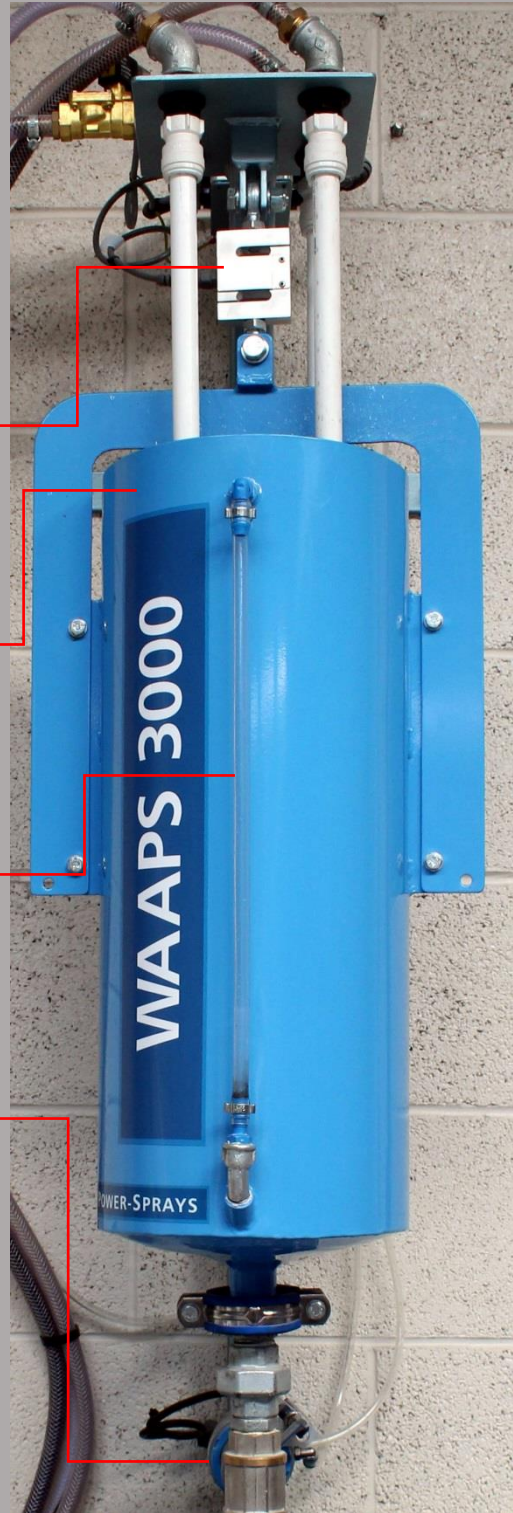
POWER-SPRAYS

50kg capacity load cell, accurate to 0.01kg

30L weighing cylinder, enough for up to 125kg of GRC

Sight glass for visual inspection of the liquids

Air actuated ball valve for rapid start/stop

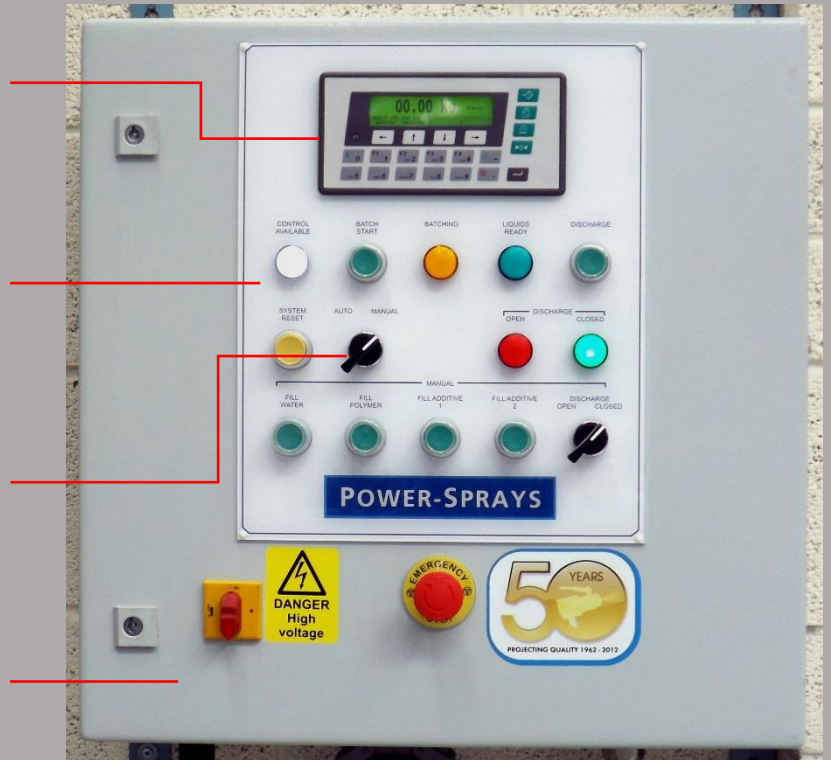


Programmable with up to 30 recipes

Simple, easy to use controls

Automatic and manual dispensing modes

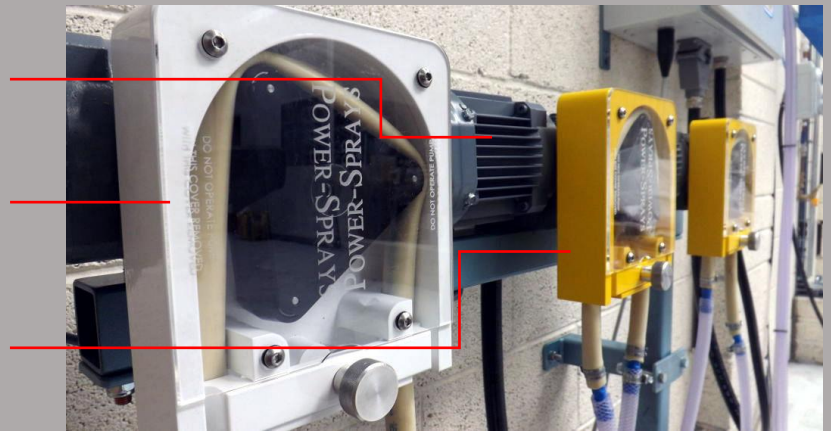
IP66 rated enclosure



Dedicated motor and pump for each liquid

Tri-roller peristaltic pump, rated at 8L/min* for dispensing acrylic polymer

Two tri-roller peristaltic pumps, each rated at 3L/min*, for dispensing additives



Optional diverter valve for supplying two mixers from one dispensing system



Accurate dispensing of the liquids used in Glass fibre Reinforced Concrete production is vital for both quality and cost control. The WAAPS 3000 Liquid Dispensing System enables this with the push of a single button.

The new weighed system used in the WAAPS 3000 allows up to 30 recipes to be programmed, with precise control over the sequence of events.

The system comprises a 30L weighing cylinder, discharge valve, three refill pumps (and valve in the case of water) and digital control module. Fitted with the optional diverter valve, it can be used to supply two mixers.

The WAAPS 3000 can be used for the accurate control of water, plasticisers, accelerators, retarders, polymers, and most other liquid admixtures used in the GRC industry.

Power-Sprays offers a wide choice of batch weighing systems for both liquid and dry materials.

Specifications

Water Inlet Valve	Solenoid activated diaphragm type	
Polymer Pump	Tri-roller peristaltic pump rated at 8L per minute*	
Admixture Pump (x2)	Tri-roller peristaltic pump rated at 3L per minute*	
Discharge Valve	Pneumatic rotary action ball valve	
Load Cell	50kg capacity, 0.01kg accuracy	
Weight	150kg	
Dimensions	Cylinder Mounting Frame	530mm wide x 1800mm high x 475mm deep
	Electrical Control Panel	600mm wide x 600mm high x 210mm deep
	Stand for Pumps	900mm wide x 1030mm high
Electricity Supply	380V, 50Hz	
Air Supply	5.5bar (80psi)	

* Pump ratings are for water pumping against a pressure head of approximately 2m. Flow rates will vary according to the rheology of the liquid and the height to be pumped. The cylinder is designed to be installed 2-3m above ground level and to discharge directly into the mixer. If it is intended to pump liquids more than 2m, please refer to Power-Sprays.

Why Buy from Power-Sprays?

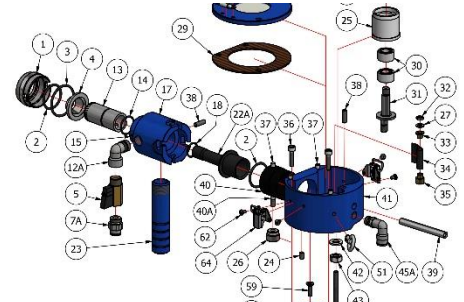
Support



Experience



Comprehensive Technical Manuals



Power-Sprays Ltd

Avonmouth Way, Bristol, BS11 9YA, UK

Tel: +44 (0)117 9820067 Fax: +44 (0)117 9820060

Email: info@power-sprays.co.uk Web: www.power-sprays.com

